

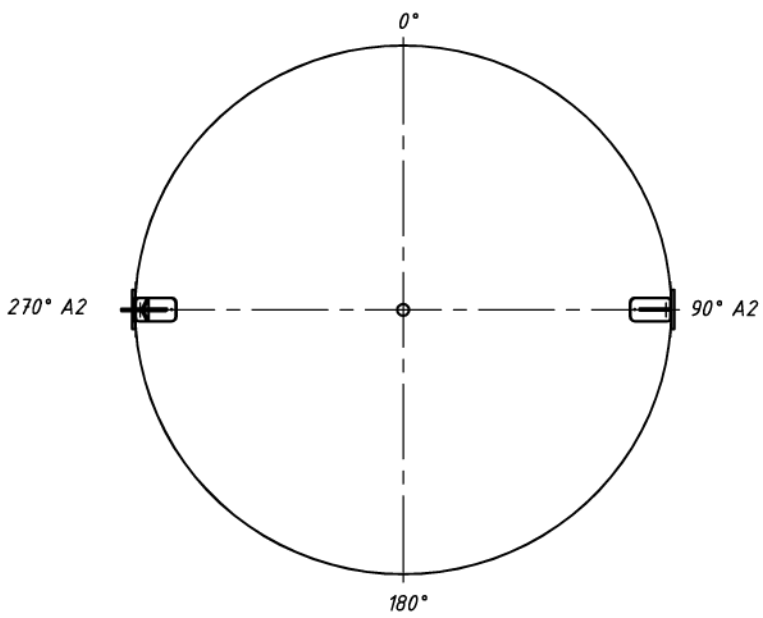
- 1.*For information only.
- 2. Non mentioned tolerances - holes H16, shafts h16, other ±IT16/2.
- 3. Not mentioned surface roughness Ra 12,5 μm.
- 4. Mark (punched in) tanks serial numbers (acc. to customer) acc. the vessel's dokumentation

Suwrimimo duomenys/ Welding data	Welds		Nondestructive examination		Remarks
	Longitudinal welds	0,7	VT 100%		
	Circumferential welds	0,7			
Other welds	0,7				

Quality level for vessel weldings seams defects - C acc. LST EN ISO 5817 : 2014 requirements

Nr./ No.	Description	Q-ty	Positioning	Flange			Type		Remarks
				SMS/DIN	PN	ASME / DIN	Facing		
A2	Lifting lugs	4	90°;270°	—	—	—	—	—	
M1	Manhole	1	0°	—	—	—	—	—	

Material data	Description	Tank
	Shell and top head	1.4301 EN 10088-2
Bottom head and outer room supports	1.4301 EN 10088-2	
Nozzle pipes	1.4301 EN 10217-7	
Nozzles	—	
Seals	—	
External bolts & nuts	—	
Internals	—	
Reinforcement plates	—	



VTM-35.4.00.000SB

Vertical tank

1:20